

THE BILL STADE AUCTION COMPANY

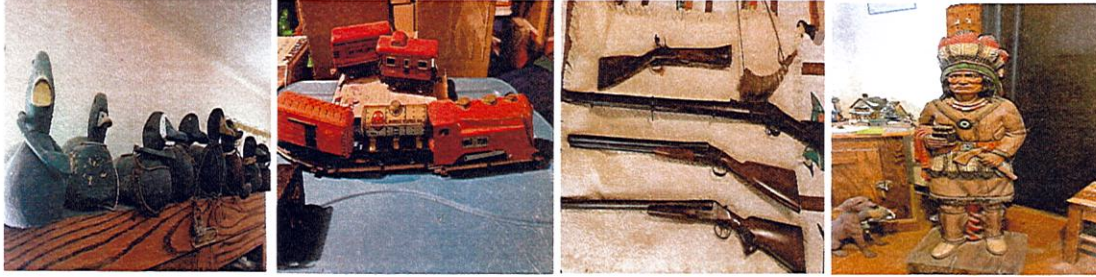
DALE ARENZ

W324 N1198 S. Lapham Peak Rd. Delafield, WI

Location: Exit I-94 (Exit 285) at Hwy. C (Genesee St.), S. 85' to Indian Spring Dr., then E. ½ mi. to S. Lapham Peak Rd., then S. ¾ mi.

SUNDAY, JUNE 13, 2021 – 10:30 A.M.

NOTE: Dale is selling his home and downsizing. He was a local attorney, avid outdoorsman, collector, and was a prominent member and leader in the local and state Waterfowlers organization. He and his wife collected for years and this house is full.



HUNTING, FISHING & OUTDOORS: Wooden & wood decorative decoys from 30's, 40's, 50's and on; 100+ wildlife prints & framed prints including Sponsor Prints from: Gromme, Koeplin, Sieve, Maas and many others; Wildlife figurines & statuary; DU Buttons 1973 to 2020; old fishing lures: bait casting reels w/boxes back to 1930's; Rubber decoys; nets; tackle; Snow Shoes; Ammo Boxes; Tin Signs; Hunting clothes, some new including - camo parkas, coats, jump suits & rain gear; Gun cabinet

BOATS & TRAILER: Late 1940's Herters Duck Boat w/ Evinrude Twin 3HP 1965 Motor; Coleman Fiber Canoe; 1994 Honda 2 HP 4 Stroke motor; 1995 14' Polar Craft Duck Boat w/collapsible blind; 1988 30HP Evinrude Motor & trailer; Seamaid 910-9'Jon Boat; Other old Boat motors back to the 1930s & 1940s; & LOTS MORE!

GUNS: Springfield Rifle (Civil War Era); 2 – Stevens 311A 12Ga. Double Barrel Shotguns; LC Smith 12 Ga. Double Barrel Shotgun; Smith & Wesson .32 Caliber Revolver; flint lock musket; relic shot guns

COLLECTIBLES: Museum quality die-cast & wood model airplanes from WWII large collection (100 models); WWII Posters; WWII Fight Plane Prints; Electric Train Sets; 1984 Reagan/Bush Campaign Poster Framed; Uniforms; Hummel's; Glassware; chamber pots; planters; Lg. set Dickens Village; Klafke Santa's; Snowmen & lots of Holiday décor; dresser sets; Books including kids – Dr. Seuss, Wizard of Oz, Disney, Dickens, Kipling, Hawthorne and Twain, Cook and wildlife books; 5 Gal. RW Jug & Crock; blue fruit jars; beer steins; Galv. Sprinkle Cans & Pails; milk cans; Bu. baskets; 2 man & buck saws; sleds; nail kegs; oil lamps; Cigar Store Indian; cigar & Lucky Strike boxes; Cameras including Cannon & Leica, 35mm & others; spool holders; & more!

FURNITURE, APPLIANCES & HOUSEHOLD: Ornate Library Table; Dry sink; Dining Table w/ 6 chairs; China hutch; Curio Cabinets; Day & single beds; dressers; wash stand; cedar chest; bedding, linens & materials; Maytag Washer; Hotpoint Elec. Dryer; sm. refrig; upright freezer; Hot Point refrig; coffee, end & sofa tables; rockers; Ice Cream Parlor set; tables; chairs; rockers; loveseat; trunks; pump organ; Kitchen cookware & utensils; dishes; knick knacks; wicker baskets; stuffed animals; lamps; pictures; mirrors; Christmas tree & décor; vacuums; sm. appliances; air conditioners

LAWN, GARDEN, TOOLS & TRAILER: Simplicity Riding Tractor w/ 3' snow blower; DR Log Splitter w/ Briggs Engine; DR walking lawn vac.; pole saws; Stihl chainsaw; Snapper push mower; weed eaters; garden sprayers; garden tools; planters, flowerpots; garden wagon, carts & tools; lawn décor; Rigid Miter saw; 10" table saw; hand tools; power tools; lots of hardware; shelving; 14' Continental Tail Wind van trailer; and lots more! **See our website for additional pictures:** www.stadeauction.com

TERMS: Cash or check, NO BUYERS FEE

Wisconsin Registered Auctioneers: Bill Stade #535 920-674-5500 Mike Stade #607 920-699-4580 Pete Stade #2836 920-674-3236 Clerk: Tom Stade Cashier: Christy Schreiner

The Bill STADE AUCTION COMPANY
"We Care"
OFFICE: SHARON, WI - PHONE (262) 736-4141